



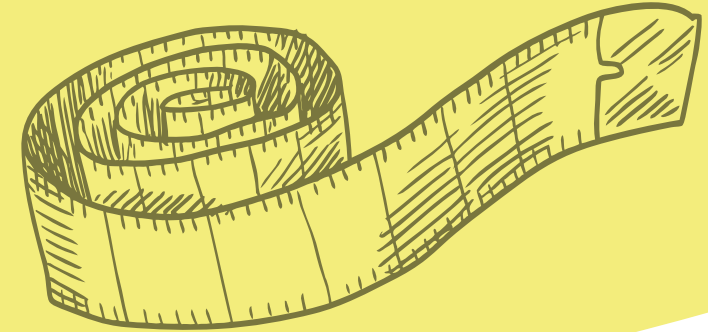
**ECO CIRCULAR**  
GARMENT PRODUCTION

# ABOUT OUR COMPANY

Barco Textile is one of the most advanced manufacturer for innovative sports wear. Our company started its activities in Istanbul in 1992, producing active sportswear. Since the day it was founded, it has always cared about technology and R&D activities. Barco has a closed area of over 48.000 square meters. It has become able to perform all processes used in production within its own structure.

## “ BARCO WITH NUMBERS

30 years experience  
1900 people in total  
7 million pcs capacity / year  
1450 pcs machinery capacity  
30 ultrasonic seam machine  
65 bonding machine  
8 laser cutting machine  
1 Galvo laser machine  
6 digital sublimation machine  
2 sublimation transfer machine



## PRODUCTION UNITS

HEAD OFFICE ISTANBUL  
PRODUCTION UNIT ISTANBUL  
& AROUND THE TURKEY

# WORLDWIDE REFERENCES

**BOSS**  
HUGO BOSS

  
**LACOSTE**

RALPH  LAUREN

EMPORIO  ARMANI

**HH**<sup>®</sup>  
HELLY HANSEN

**EA7**  
EMPORIO  ARMANI

A|X  
ARMANI EXCHANGE

  
GIORGIO ARMANI

Calvin Klein

**NAPAPIJRI**  
**NAPAPIJRI**

ALEXANDER  
MQUEEN

PAUL & SHARK  


**COLMAR**

TOMMY  
HILFIGER

  
MONCLER<sup>®</sup>

 ISAORA.

ALEXANDER  
MQUEEN

Timberland 

arena  


**Theory**

THE  
NORTH  
FACE 

OYSHO

**ZARA**

next

  
NAUTICA

GAP

GUESS

  
LYLE & SCOTT

  
SKECHERS

ROSSIGNOL 

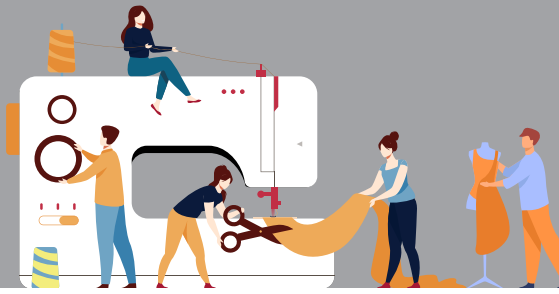
DECATHLON

*Rapha*<sup>®</sup>

  
AETHER

**PUMA** 

# WHY DO YOU CHOOSE US



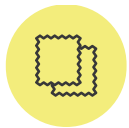
Our company, which has been manufacturing since 1992, continues its activities by targeting continuous development with all its know-how



## PRODUCT SAFETY

Certificates that we have gained from internationally accredited institutions

GRS	Global Recycle Standard
GOTS	Global Organic Textile Standard
OCS	Organic Content Standard
OEKO-TEX	Sustainable Textile Production
ISO	Quality and Environmental Systems



## FABRIC CONTENT & WEIGHT RANGE

Very wide range and type of knit, warp knit and woven fabric processing

18gr/m <sup>2</sup> to 550gr/m <sup>2</sup> weight range
100% Cotton or with Elastane
100% Polyester or with Elastane
100% Nylon or with Elastane
Technical fabrics (mix of synthetic of cotton)



## SOCIAL COMPLIANCE

Success in different social compliance audits according to customer requirement

SEDEX
BSCI
CUSTOMER AUDITS



## MINIMUM PRODUCTION CONDITION

Production in efficient capacity with effective planning

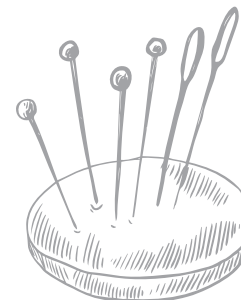
75 - 125 days from imported fabrics
45 - 90 days from local fabrics
1.000 pcs. per colors per styles order



## QUALITY MANAGEMENT

Effective quality control practices at every stage of production;

Inhouse laboratory for fabric physical tests
Four point fabric inspection system
100% cutting quality control
Quality control on sewing lines
Final inspections according to the AQL table



# PRODUCT CATEGORIES



## SWIMWEAR

Waterproof , Windproof , Digital Sublimation Print, Water-repellent fabric , Tape Seam , Lase Cut



## ACTIVWEAR

Ultra Light , Breathable , Waterproof , Windproof , Digital Sublimation Print, Water-repellent fabric , Tape Seam , Lase Cut



## OUTERWEAR

Waterproof , Windproof , Digital Sublimation Print, Water-repellent fabric , Tape Seam , Lase Cut



## NEW AGE CLASSICS

Breathable , Waterproof , Water-repellent fabric.



# PRODUCTIONS & TECHNOLOGIES

---



## SAMPLE ROOM

Pattern software by Assyst • 15 pattern makers & 20 sewing operators  
Seperated full machine park • 600 square meters area



## FABRIC WAREHOUSE

Four point fabric inspection system machines  
Fabric relaxing machines



## LABORATORY

Accredited colour fastness tests, ph value and other physical tests



## ACCESSORIES & TRIMS WAREHOUSE

Locked accessories and trims shelves  
100% accessories and trims inspections



## CUTTING

Full automatic cutter machine by Bullmer  
Full automatic laying machine by Ozbilim  
Full automatic laser cutting by SEI Galvo



## SEWING

950 pcs sewing machines • 30 pcs ultrasonic machines  
65 pcs bonding machines • Automations sewing machines



## PRINTING

1 pcs calender by Monti Antonio • 20 pcs heat transfer press  
6 pcs digital sublimation • 5 pcs laser cutting for transfer films



## IRONING & FINISHING

Vacuum/Blowing/Steam ironing machines  
Large and clean packing tables



## QUALITY & INSPECTION

413 C pantone inspection tables with D65 daylights  
Calibrated measurement tools



## EMPLOYEES

1900 qualified employees  
Training programmes for employees

# TERMS AND CONDITIONS

- Proto sample preparation cost is between 500 / 1000 Euro per style. This is just the cost of developing clothes. Additional costs such as mold making will be added to the fee.
- The Proto sample is prepared within 3 to 5 weeks if the fabrics and trims are ready.
- Salesmen samples (SMS) will be charged two times of FOB costs.
- Salesmen samples (SMS) production lead time is 6 to 8 weeks for garment production. The fabric and trims will be added.
- MOQ for bulk 3000 pcs. per style & 1000 pcs. per color lower quantities will be upcharged.
- Leadtime for bulk : 6 - 14 weeks depending fabric and trim leadtime.
- Payment terms for SMS and Bulk; 30% payment at the time of order and 70% before delivery.



# SUSTAINABLE POINTS



**HEATING & COOLING SYSTEMS**



**SELF - CLEANING URINALS WITHOUT  
USAGE OF WATER**



**WASTE WATER TREATMENT SYSTEM**



**SOLAR PANEL SYSTEM**



**SUN TRACKER SYSTEM**



**SUN TRACKER SYSTEM**



**WASTE MANAGEMENT SYSTEM**



**FIRE SAFETY**



# CORPORATE SOCIAL RESPONSIBILITY

BIKE TOUR FOR KIDS



Barco is Sponsor of the Buyukcekmece  
Cycling Team & the Çatalca Natural  
Sports Club



With VELO TURK BARCO supports  
1000 kids giving t-shirts to them

The kids come there with 1000  
cycles to take part at this activity



# CORPORATE SOCIAL RESPONSIBILITY

SUPPORTS FOR IDEALISTIC PEOPLE



# CORPORATE SOCIAL RESPONSIBILITY

SUPPORTS FOR NATIONAL SPORTS ACTIVITIES

